

WÖHLER

NEW

EVERYTHING UNDER CONTROL



Wöhler Refrigeration

Professional refrigeration systems designed to meet the the toughest requirements



Made in Germany



Wöhler Refrigeration

Everything under control with Wöhler refrigeration technology products

Equipped for the heating transition

To keep things running efficiently, it's crucial to optimize heat pumps and refrigerant systems. Making sure everything is sealed up tight is key, too, since any refrigerant leaks can harm the environment and lower system performance. With Wöhler refrigeration tech, you can easily tweak your system and perform leak tests, helping both the planet and your setup.

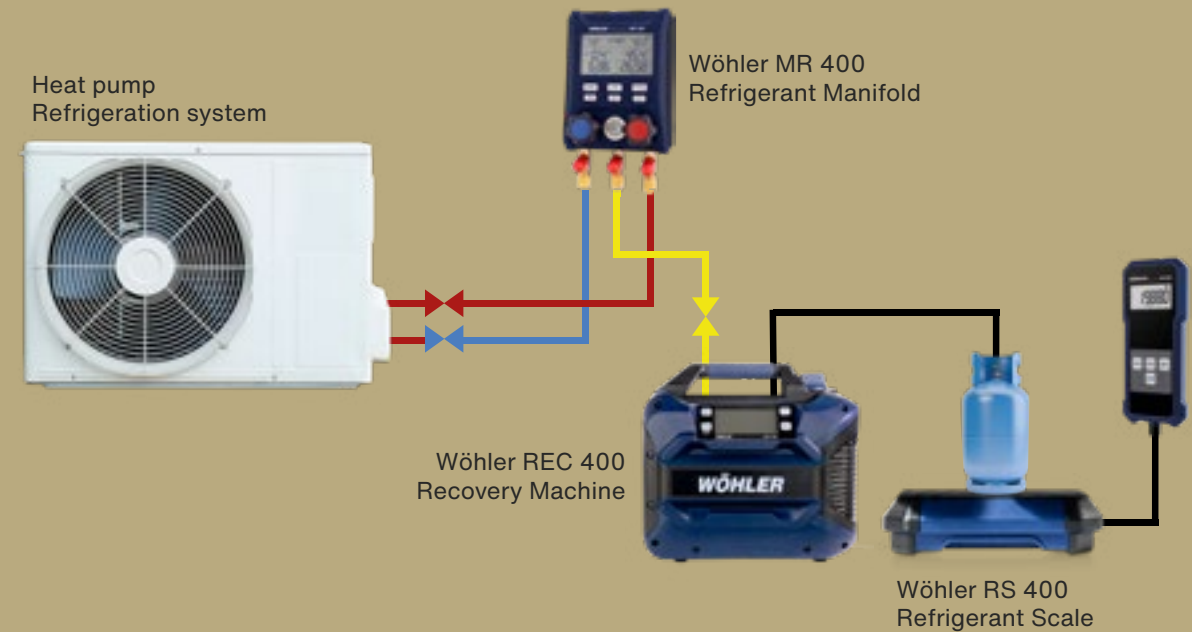
Professional measuring devices for real professionals

As a refrigeration engineer, you need to monitor various factors like pressure, temperature, superheating, subcooling, and refrigerant levels. Wöhler provides a comprehensive range of refrigeration system equipment to assist you. If you suspect a refrigerant leak, you can trust your refrigerant leak detector to help you identify the issue. The refrigerant manifold is perfect for adjusting the settings of heat pumps and refrigerant systems. For safe and efficient refrigerant extraction, the recovery machine is your go-to tool, complemented by your refrigerant manifold and scale. Ensure safe evacuation of refrigerant systems with the vacuum pump. All of these devices are durable and meet the necessary standards. Explore Wöhler's complete solutions for refrigeration technology!

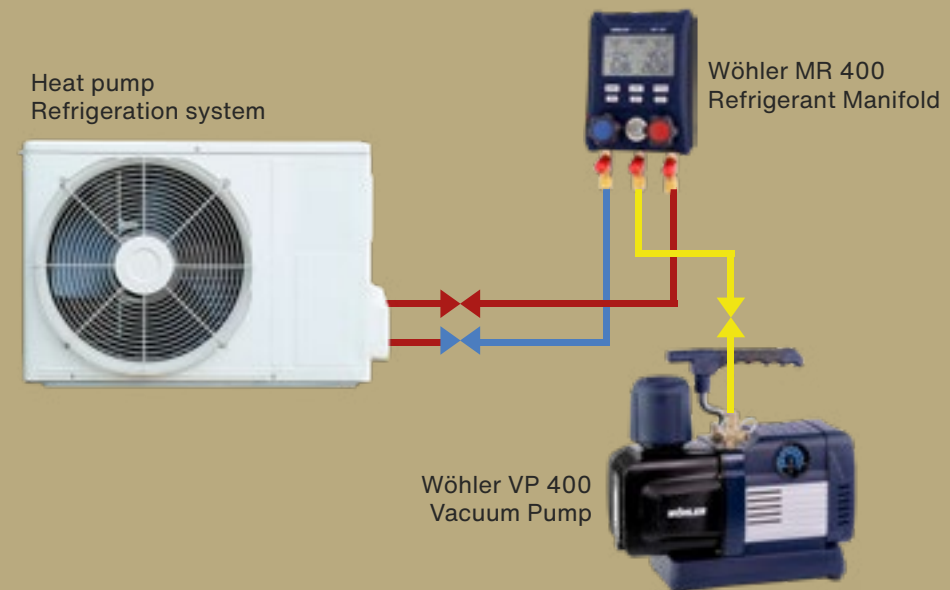


Application Examples

Emptying refrigeration circuits



Vacuating refrigeration circuits



Wöhler MR 400 Refrigerant Manifold and Wöhler RS 400 Refrigerant Scale

Advantages

- ▶ Can be used with all common refrigerants
- ▶ Easy handling due to practical accessories, for example lockable connection hoses (ball valves)
- ▶ All information is clearly visible on the digital screens of the units
- ▶ Easy storage and transport due to the plastic case and high-quality carrying bag



Wide range of applications due to the various measurement options.



Thanks to the digital display, you can keep an overview when filling or draining refrigerant systems.



Wöhler MR 400 Refrigerant Manifold

Digital Refrigerant Manifold for maintenance work on refrigeration systems and heat pumps.

Scope of delivery: Wöhler MR 400 Refrigerant Manifold, 3 x refrigerant hoses, each with Schrader valve 1/4" SAE, closable with ball valve, 2 x temperature clamps, 3 x AA batteries 1.5 V, Case

Article no. 11367



Wöhler RS 400 Refrigerant Scale

Digital refrigerant scale for determining the weight of the refrigerant during maintenance tasks.

Scope of delivery: Wöhler RS 400 Refrigerant Scale with operating unit, 5 x AAA batteries 1.5 V, Bag

Article no. 11363



Robust housing



Digital display



Ball valves at the connection hoses



Non slip rubber coating



For all common refrigerants

Application

Wöhler MR 400 Refrigerant Manifold

- ▶ Maintenance work on refrigeration systems and heat pumps
- ▶ Diagnosis of operating states of refrigerants in refrigerant circuits
- ▶ Indication of high and low pressure
- ▶ Measurement of superheating and subcooling
- ▶ Vacuum measurements
- ▶ Pressure drop measurements

Wöhler RS 400 Refrigerant Scale

- ▶ Weight measurement to determine the contents of pressure vessels



Easy to carry out maintenance work on heat pumps.



Connection hoses with ball valves for quick closing and opening of refrigerant flow.

Technical Data

Wöhler MR 400 Refrigerant Manifold

Pressure

Measurement range:	-1...55 bar
Accuracy:	±0.5 % of the full scale value
Resolution:	0.03 bar

Temperature

Measurement range:	-40...302 °F
Accuracy:	±0.9 °F
Resolution:	0.18 °F

Refrigerant

R113 R114 R115 R116 R12 R123 R1233ZD R1234ZE R1234YF R124 R125 R13 R134A R14 R141b R142b R143A R152A R170 R22 R23 R236FA R245FA R290 R32 R401A R401b R401C R402A R402b R403b R404A R406A R407A R407b R407C R407d R407F R408A R409A R410A R410b R412A R413A R414A R414b R416A R417A R417C R420A R421A R421b R422A R422b R422C R422d R424A R426A R427A R428A R429A R434A R437A R438A R441A R443A R448A R449A R450A R452A R452b R453A R454A R454b R455A R458A R500 R502 R503 R507A R508A R508b R514A R600 R600A R601A R718 R744

Power supply

3 AA batteries 1.5 V

Wöhler RS 400 Refrigerant Scale

Weight

Measurement range:	0...220.5 lbs
Accuracy:	±0.5% of the measured value + 0.02 lbs
Resolution:	0.01 lbs

Power supply

5 AAA alkaline batteries

Wöhler REC 400 Recovery Machine

Advantages

- ▶ Large, easy-to-read and illuminated display
- ▶ Guided operating support through an intelligent warning and operating concept
- ▶ Integrated pressure sensor incl. overpressure protection from 38.5 bar
- ▶ Self PURGE mode so that different refrigerants are not mixed
- ▶ Push-pull method for fast emptying of large systems

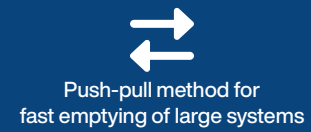


Wöhler REC 400 Recovery Machine

For extracting refrigerants from refrigeration and air conditioning systems

Scope of delivery: Wöhler REC 400 Recovery Machine

Article no. 10238

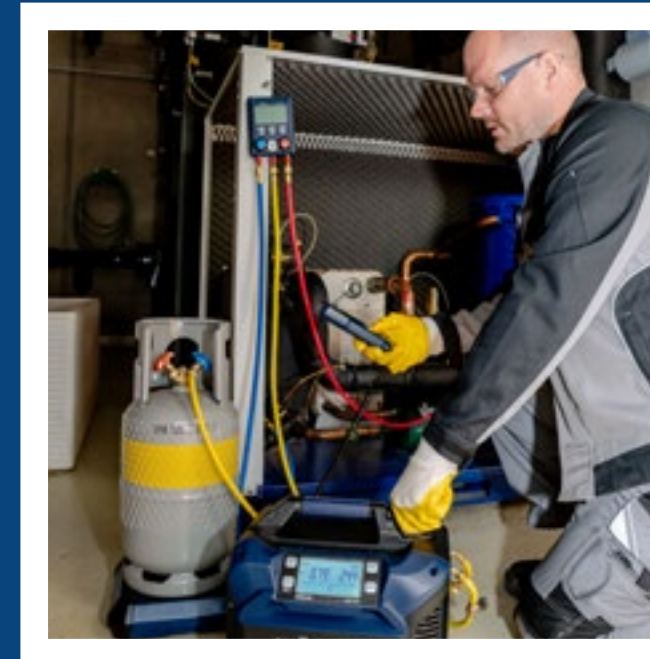


Application

- ▶ Your reliable helper for extracting classes A1, A2 and A2L refrigerants
- ▶ An additional refrigerant manifold (e.g. Wöhler MR 400) and a refrigerant scale (e.g. Wöhler RS 400) are required to extract the refrigerant



Large, illuminated display.



Connection hoses with ball valves for quick closing and opening of the refrigerant flow.

Technical Data

Maximum pressure 38.5 bar
(automatic switch-off at higher pressure)

Motor 750 W

Refrigerants

	R12
Cat. A1:	R134a, R402A, R402B, R404A, R407A, R407B, R407C, R407D, R408A, R409A, R410A,
Cat. A2:	R411A, R411B, R412A
Cat. A2L:	R32

Dimensions 14.76" x 9.84" x 12.6"

Weight 22 lbs

Gas flow rate refrigerant (liquid)

R134a	5.3 lbs/min
R22	5.9 lbs/min
R410A	7.7 lbs/min

Wöhler VP 400 Vacuum Pump

Advantages

- ▶ 2-stage vacuum pump
- ▶ Analog vacuum display for reading the evacuation process
- ▶ Oil level indicator for easy reading of the oil level
- ▶ Various connection options for common refrigerant hoses
- ▶ The gas ballast valve reduces the absorption of any condensate that may occur during evacuation



Wöhler VP 400 Vacuum Pump

For the evacuation of refrigerants

Scope of delivery: Wöhler VP 400 Vacuum Pump, oil bottle

Article no. 10239



2-stage vacuum pump



Oil level indicator



Various connection options for common refrigerant hoses

Application

- ▶ Can be used on all standard refrigeration systems and heat pumps
- ▶ Suitable for all common refrigerants



You can always keep track of the evacuation process through the vacuum display.



Connection hoses with ball valves for quick closing and opening.

Technical Data

Flow rate 8.5 CFM, 8,149 ozs/min

Performance 750 W

Connection thread 1/4" SAE, 3/8" SAE, 1/2" SAE

Dimensions 13.7" x 5.47" x 13.1"

Weight 24.3 lbs

Wöhler RL 300 Refrigerant Leak Detector

Advantages

- ▶ Precise and reliable detection of smallest leaks due to high sensitivity
- ▶ Automatic zero value setting
- ▶ Fulfils the requirements of the F-Gas Regulation and DIN EN 14624:2020
- ▶ Digital bar graph display of the refrigerant concentration in 11 levels
- ▶ Visual, acoustic and vibration alarm



Wöhler RL 300 Refrigerant Leak Detector

For checking for leaks and detecting leaks in refrigeration systems

Scope of delivery: Wöhler RL 300 Refrigerant Leak Detector with gooseneck 440 mm, Batteries, Plastic case

Article no. 3832



High sensitivity to detect the smallest leaks



Digital bar graph display of the refrigerant concentration



Visual, acoustic and vibration alarm

Application

- ▶ Leak detection on refrigeration systems and heat pumps



You won't be left in the dark: In low-light conditions, the display lights up, and two LED lamps turn on automatically.



Precise detection of all common refrigerants.

Technical Data

Tested for R134a, R1234yf und R290

Detectable refrigerants

FCKW:	R11, R12, R500, R503, R502
HFCKW:	R22, R123, R124
HFKW:	R134a, R404a, R410a, R407C, R32
others:	R290, R600a, R1234YF, forming gas (95% N ₂ + 5% H ₂)

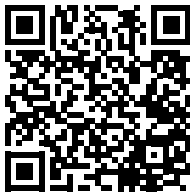
Sensitivity (R134a) 3 g/a

Sensor

Zeroing: Automatic or manual

Response time (R143a) 2.1 s

Power supply 4 AA mignon cells (alkaline)



Scan the QR code and learn more!

WÖHLER

Wohler USA Inc.
208 S Main Street · Middleton, MA 01949
Phone: +1 978 750 9876
Email: info@wohlerusa.com
www.wohlerusa.com