



Temperature Data Logger EBI 12

for process control and quality assurance in dry production processes

RED LINE

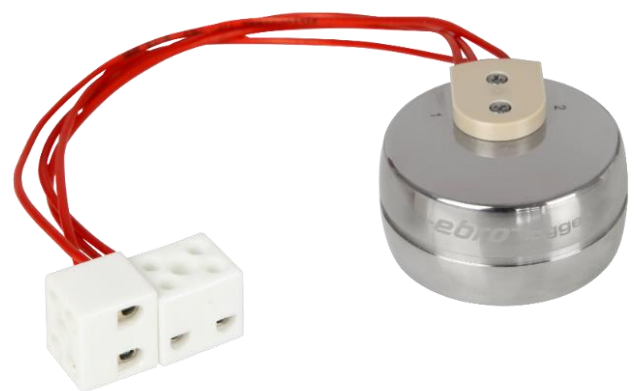
EBI 12-T480

The data logger is often used in production for Quality assurance is used. The sensor connection by means of chandelier clamp allows a quick change of the PT1000 probe.

- Application range from -90 °C to 150 °C
- High temperature accuracy of up to 0.05 °C
- Version with two measuring channels
- Quickly replaceable probe

Technical Data:

Operating temperature	-90 °C ... +150 °C
Measurement range	-200 °C ... +400 °C
Accuracy	± 1,5 °C (-200 °C ... -90 °C) ± 0,5 °C (-90 °C ... -40 °C) ± 0,2 °C (-40 °C ... 0 °C) ± 0,1 °C (0 °C ... +120 °C) ± 0,05 °C (+120 °C ... +140 °C) ± 0,1 °C (+140 °C ... +150 °C) ± 0,5 °C (+150 °C ... +250 °C) ± 0,8 °C (+250 °C ... +400 °C)
Resolution	0,01 °C
Data memory	2x 50.160 Measurements
Sensor	PT1000, class A
Measurement interval	250 ms ... 24 hours
Real-time data transmission	Yes
Storage temperature	-20 °C ... +70 °C
Measurement modes	<ul style="list-style-type: none"> • endless measurement • measurement from the start time • Measure software until memory is full • Start- / Stop measurement
Battery	Lithium, 3,6 V, User-replaceable
Dimensions	(Ø x H) 48 mm x 24 mm
Weight	App. 90 g
Housing material	316 L stainless steel / PEEK
Protection class	IP68
Factory Calibration Certificate	-200 °C, -50 °C, 0 °C, +60 °C, +134 °C, +250 °C and +400 °C



Standards and Directives:

- 2014/53/EU
Radio Equipment Directive RED
- DIN EN 301 489
Electro Magnetic Compatibility (EMC)

Type	Description	Part No.
EBI 12-T480	Data Logger with Luster Terminal	1340-6633