

WLX.basic

ebro Logger Software next Generation

Introduction

PM Roland Trübswetter



WLX.basic

What is WLX.basic?

WinLog neXt



Full replacement of Winlog.basic application software



First version of new ebro software group



Only for MS Windows® operating systems on PCs

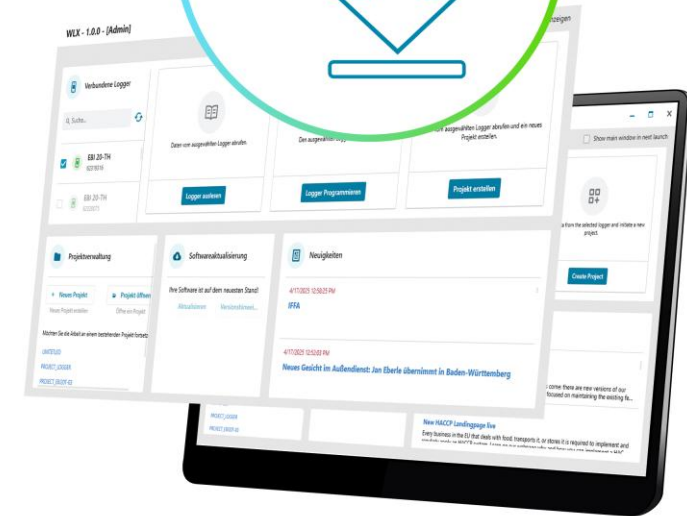
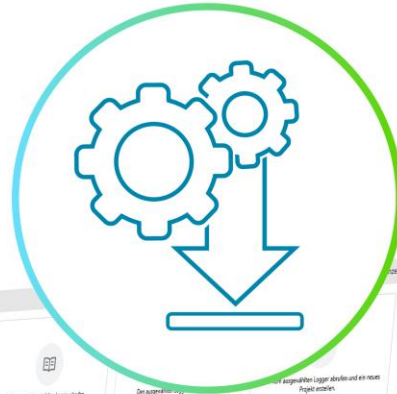


Free of charge



Supports EBI 20, EBI 300, EBI 310 and EBI 330 data loggers

WLX Logger Software



WLX.basic

Minimum system requirements



MS Windows 10 or 11 operating system on PC



8 GB RAM



1 GB hard drive memory



Dual Core 2 GHz with x64 or x86 technology

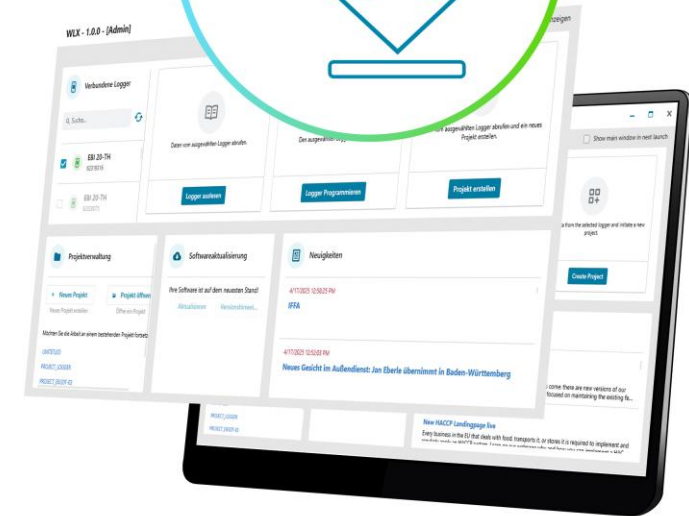


Full HD screen resolution (1920 x 1080 pixels)



USB 2.0 interface

WLX Logger Software



WLX.basic

Concept

Meaningful improvements



Build on strengths of Winlog.basic: simple, focused, free



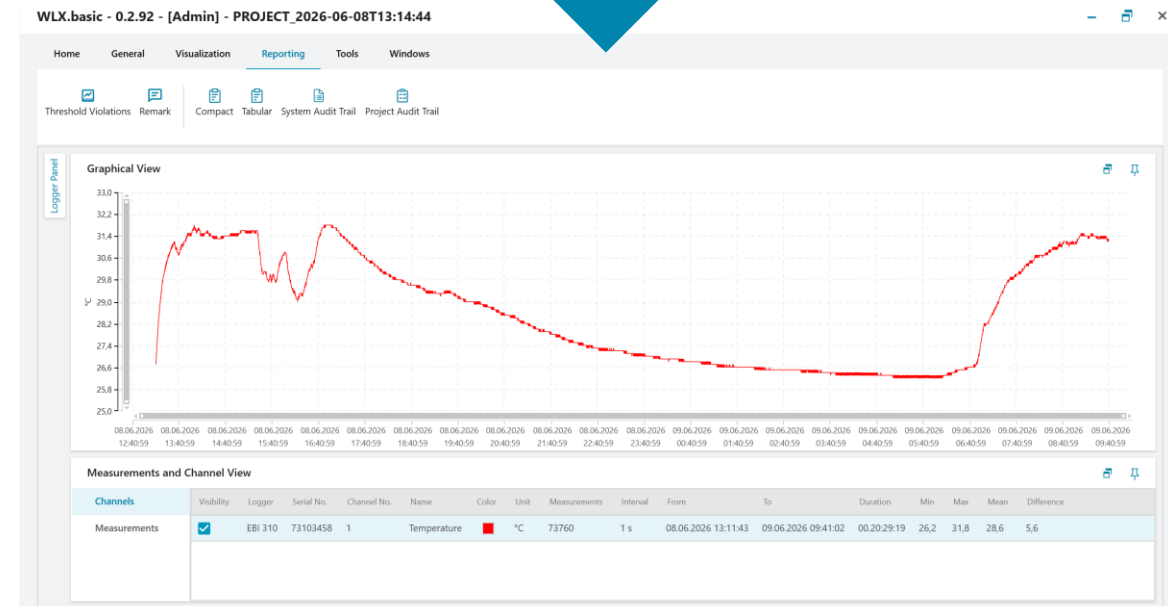
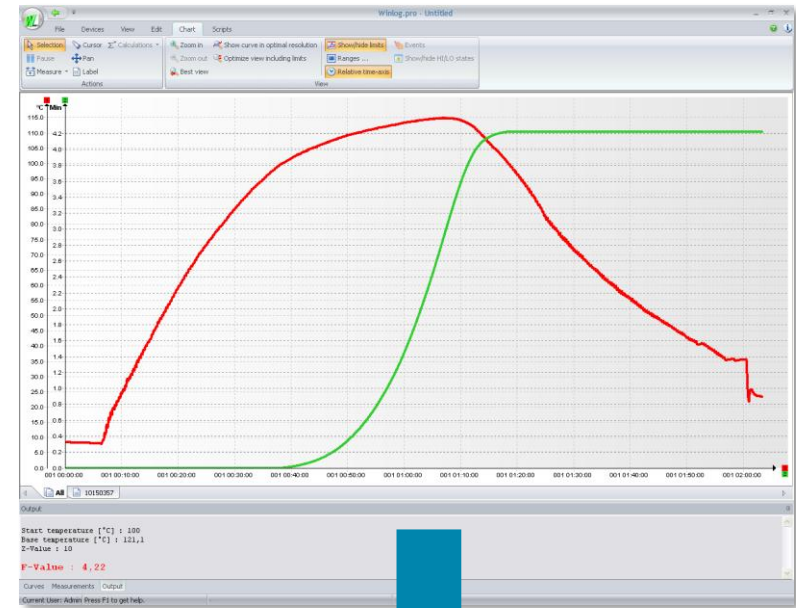
Make it a full replacement of Winlog.basic: all features incl. languages



Make it up-to-date: modern GUI, database, modern architecture, etc.



Make it ready for the future: good foundation for large upcoming enhancements



WLX.basic

What do we keep?

Key Legacy Features



Focus on handling one single data logger at a time



Easy data storage and report generation



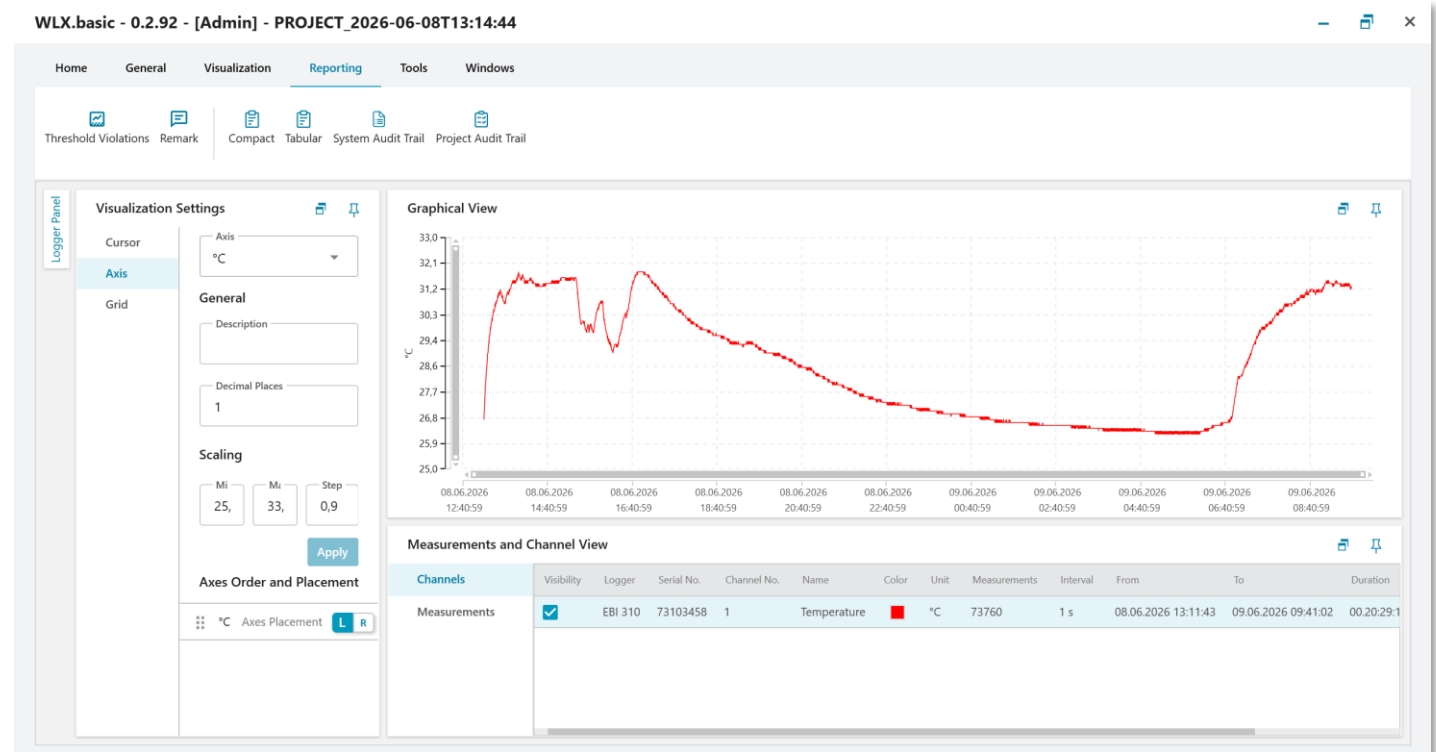
Basic evaluation options



Import from legacy softwares,
export to .csv and .xlsx formats



FDA 21 CFR Part 11 compliance



WLX.basic

What is new?

Key New Features



All measured data are stored in a database



Threshold report delivers all deviations of the measurement




Logger readout and report generation in one step



Software update functionality



Window panels can be re-sized and dragged to other screens




Software Update

Your current version of WLX.basic is outdated!


Version 1.1.0 of WLX.basic is now available for download.

[Update](#) [Release N...](#)




Retrieve data from the selected logger.

[Readout Logger](#)



Program the selected logger

[Program Logger](#)



Retrieve data from the selected logger and initiate a new project.

[Create Project](#)

WLX.basic

Database and projects



The application has its own SQL database

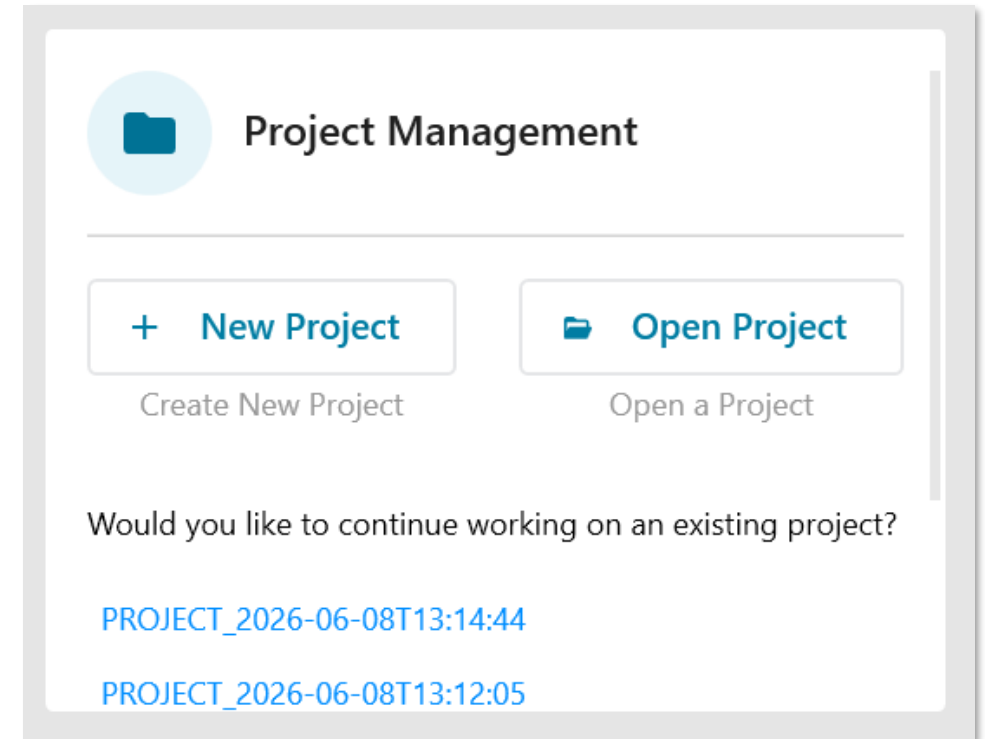


No separate files any more (except report PDFs)



Projects

- are new feature introduced with WLX.basic
- allow users to add together multiple measurements of the same logger
- allow evaluation across multiple measurements of the same logger
- Are easily created alongside reading a logger



WLX.basic

Welcome screen

Logger selection

Data reading / project creation

Logger programming

The screenshot displays the WLX.basic Admin interface with the following components:

- Header:** WLX.basic - 0.2.92 - [Admin]
- Connected Loggers (Left Panel, Red Box):** Includes a search bar and a list of loggers. One logger is selected: **EBI 310** (ID: 73103458).
- Readout Logger (Middle Panel, Green Box):** Contains the instruction "Retrieve data from the selected logger." and a **Readout Logger** button.
- Program Logger (Middle Panel, Blue Box):** Contains the instruction "Program the selected logger." and a **Program Logger** button.
- Create Project (Right Panel, Green Box):** Contains the instruction "Retrieve data from the selected logger and initiate a new project." and a **Create Project** button.
- Project Management (Bottom Left):** Features **New Project** and **Open Project** buttons, and a list of existing projects.
- Software Update (Bottom Middle):** Displays a message: "Your current version of WLX.basic is outdated! Version 1.1.0 of WLX.basic is now available for download." with **Update** and **Release N...** buttons.
- News (Bottom Right):** Shows news items with dates and titles, such as "5/28/2026 11:15:00 AM" and "WLX. Basic - Webinars".

WLX.basic

Welcome screen

Project Management

Software Updates

News section

The screenshot displays the WLX.basic Admin interface. At the top, the title bar reads "WLX.basic - 0.2.92 - [Admin]". The main content area is divided into three columns. The left column, titled "Connected Loggers", shows a search bar and a list of loggers, including "EBI 310" with ID "73103458". The middle column contains three cards: "Readout Logger" (Retrieve data from the selected logger), "Program Logger" (Program the selected logger), and "Create Project" (Retrieve data from the selected logger and initiate a new project). The right column contains a "News" section with two news items: "WLX. Basic - Webinars" dated "5/28/2026 11:15:00 AM" and "The Ministry of Defence (Netherlands) meets the eb..." dated "4/22/2026 9:09:42 AM".

WLX.basic - 0.2.92 - [Admin]

Connected Loggers

Search...

EBI 310
73103458

Readout Logger
Retrieve data from the selected logger.

Program Logger
Program the selected logger

Create Project
Retrieve data from the selected logger and initiate a new project.

Project Management

New Project
Create New Project

Open Project
Open a Project

Would you like to continue working on an existing project?

PROJECT_2026-06-08T13:14:44

PROJECT_2026-06-08T13:12:05

Software Update

Your current version of WLX.basic is outdated!
Version 1.1.0 of WLX.basic is now available for download.

Update Release N...

News

5/28/2026 11:15:00 AM

WLX. Basic - Webinars

4/22/2026 9:09:42 AM

The Ministry of Defence (Netherlands) meets the eb...

WLX.basic

Project screen

User menu and function bar

Graphical view

Measurements and channel view

WLX.basic - 0.2.92 - [Admin] - PROJECT_2026-06-08T13:14:44

Home General Visualization Reporting Tools Windows

Open Readout Program Skip Welcome Screen Help

Logger panel

Logger Panel

Visualization S...

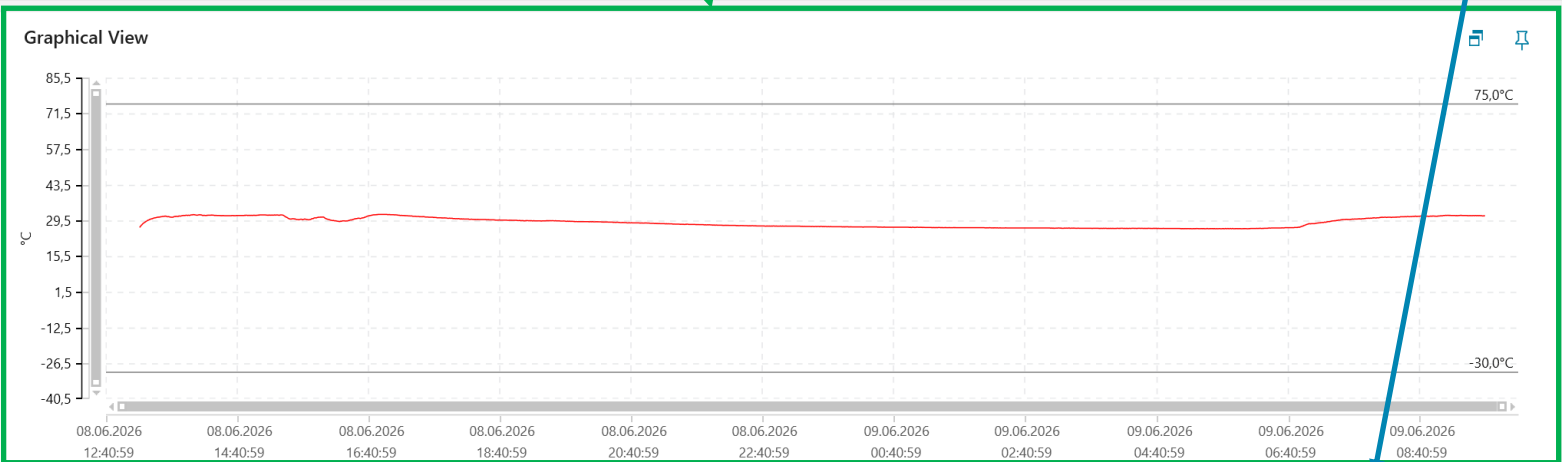
Cursor

Axis

Grid

Enable Cursor mode to see more details

Visualization settings and Cursor mode



Measurements and Channel View

Channels	Visibility	Logger	Serial No.	Channel No.	Name	Color	Unit	Measurements	Interval	From	To	Duration	Min	Max	M
Measurements	<input checked="" type="checkbox"/>	EBI 310	73103458	1	Temperature	■	°C	73760	1 s	08.06.2026 13:11:43	09.06.2026 09:41:02	00:20:29:19	26,2	31,8	2

Reports



Quick and easy report generation from project view or while reading data from logger



Report types:

- Compact
- Tabular
- System audit trail
- Project audit trail
- New report type: threshold violation



Company logo can be changed




Company text information can be added



Saved as PDF files

User Information



Creation Date: 2026-06-09 10:03:00+02:00
Software: WLX.basic
Version: 0.2.92

Created by: Admin

Compact Report

Data Logger: EBI310 Serial Number: 73103458

Title: Information:

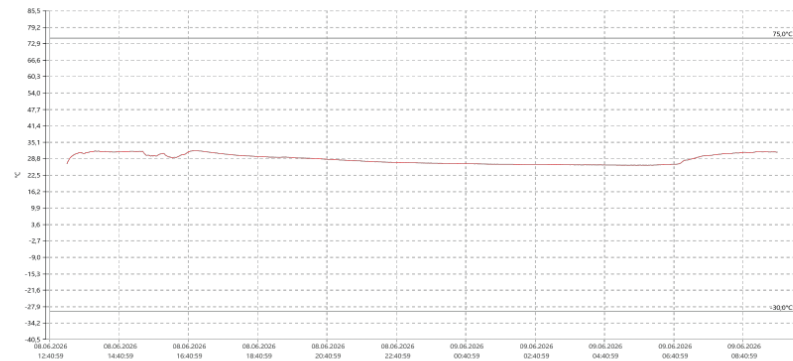
Explanation: Description: niggln

Measurement Summary

Amount of Measurements	Interval	Start Time	Stop Time	Duration
73760	1 s	2026-06-08 13:11:43+02:00	2026-06-09 09:41:02+02:00	00:20:29:19

Statistical Data

Channel	Unit	Channel Name	Min	Max	Mean	Variance	Std. Deviation	Max. Difference
1	°C	Temperature	26,2	31,8	28,6	3,7	1,9	5,6



Executed by [Signing User] Verified by [Verified By]

Creation Date: 2026-06-09 10:03:33+02:00 Page [1] of [1] www.ebro.com

PROJECT_2026-06-08T13:14:44

WLX.basic

Other New Features



Change of language of the GUI in the settings



Optional logger reprogramming after reading data



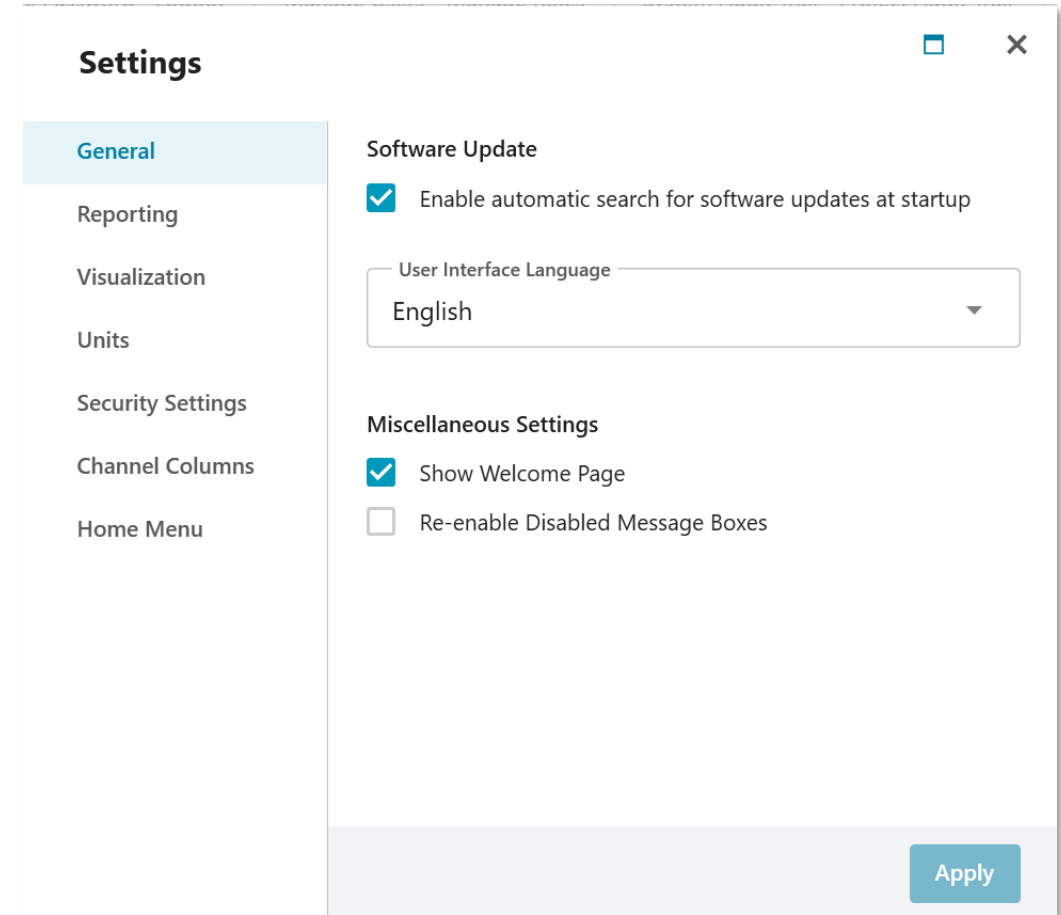
Integrated ebro news feature



User roles can be defined



Additional statistical data (time above max or below min, std. deviation, variance)



WLX.basic

Availability



Free of charge download via webshop and website



Download link can be sent by ebro support team on request



WLX.basic included in all standard EBI 20 sets



WLX.basic

Discontinuation of Winlog.basic



With the release of WLX.basic, Winlog.basic will be discontinued



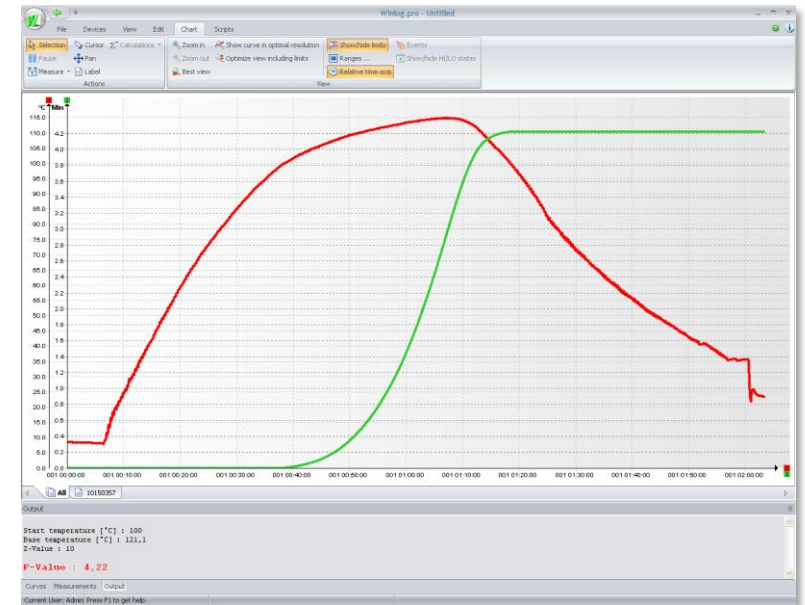
Existing instances of Winlog.basic are expected to run on Windows operating systems for a long time, but there's no guarantee



Winlog.basic will receive no further updates



Updating Winlog.basic to WLX.basic is not possible



WLX software platform

Concept

Free basic version with optional proprietary licenses



WLX.basic incl. updates will always be for free



Additional features equivalent to Winlog.pro and Winlog.validation will be unlocked via licenses subject to charge




Licenses can be unlimited in duration, a yearly subscription, linked to a particular machine or person or company, etc.



If license expires, WLX features will fall back to WLX.basic. No data loss, but fewer functions



WLX software platform

	WLX.basic (free of charge)	WLX.pro license	WLX.validation license
FUNCTIONS	 <p>WLX download</p> <p>Basic functions accessible</p> <p>Enhanced features already downloaded, but not accessible</p>	<p>Basic functions accessible</p> <p>Enhanced features accessible</p> <p>Examples:</p> <ul style="list-style-type: none"> - Support of EBI 111 loggers - Support of enhanced evaluation and documentation features - No support of automatic validation report 	<p>Basic functions accessible</p> <p>Enhanced features accessible</p> <p>Examples:</p> <ul style="list-style-type: none"> - Support of EBI 111 loggers - No support of enhanced evaluation and documentation features - Support of automatic validation report
UPDATES	<p>Security updates, bug fixes, new operating systems, free future features</p> <p>No access to future enhanced features</p>	<p>Security updates, bug fixes, new operating systems, free features</p> <p>Access to future enhanced features (unless exclusive for other license)</p>	<p>Security updates, bug fixes, new operating systems, free features</p> <p>Access to future enhanced features (unless exclusive for other license)</p>

xylem

Thank You

